

## MI-LED Series LED Fluorescence Illumination



MI-LED is a fluorescence illuminator in LED light source, it is used to upgrade inverted biological microscope to fluorescence microscope. Special with built-in color LED lamps and module design, the illuminator is well fit to Olympus CKX41, Olympus CKX53, Olympus IX51 and Olympus IX71 inverted microscope for live cell. On purpose of user friendly, the products is lightweight and small volume. Combine light source, filter sets in one unit.

### Features

- Compact design all in one unit
- 3W cold LED lamp for each filter group
- Continuously adjustable brightness with rotatable knob
- No need preheating or cooling, open to use
- Accurate lever control different color lighting
- One-stop operation of light source and filter, no need change light source
- No need external or added power supply, PSE labeled power adapter
- Safety, environment friendly and human friendly
- Coated precision-cast aluminium with vented design
- CE, FCC, EMC, EU, ISO certified

### Applications:

- Embryology
- IVF
- Genetics Andrology
- Cell biology
- Neuroscience
- Sperm analysis



Brightness control  
Continuous  
Rotatable

AC connector  
Low power  
Energy saving  
Electrical safety

Vented design  
Heat dissipation  
Durable

Laser printing mark  
Accuracy lever  
One stop operation  
Various observation

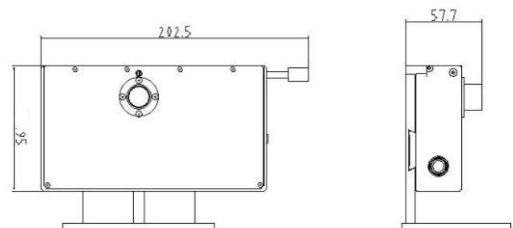
Qualified filters  
Well manufactured cube  
Precision cast



Olympus CX41

Olympus CKX53

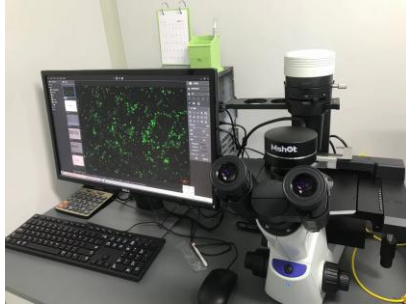
### Dimension: unit mm



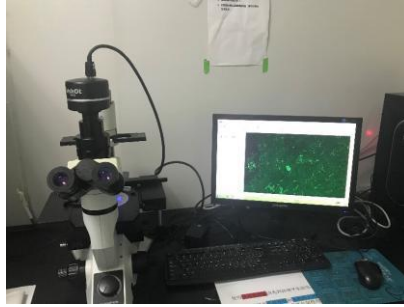
## Specification

Modes	Items	LED lamps	Filter Groups	Compatible microscopes
Two colors	MI-BG-LED	Blue and Green	Blue and Green	Olympus CKX41 Olympus CX53 Olympus IX51 Olympus IX71
Three colors	MI-BGU-LED	Blue, Green and UV	Blue, Green and UV	
Standard configuration				
Color	LED lamp	Filter wavelength		
		Excitation filter	Dichroic mirror	Emission filter
Blue	Blue	480/40nm	505nmLP	510nmLP
Green	Green	530/40nm	570nmLP	590nmLP
UV	UV	360/50nm	400nmLP	420nmLP
<b>Light source</b>	3W LED cold lamp for each filter group			
<b>Observation</b>	Fluorescence, bright field & phase contrast for microscope original lighting			
<b>Operation</b>	Lever : B, G, UV/O (bright field)			
<b>Power control</b>	Rotatable knob, continuously adjustable brightness			
<b>Input power</b>	DC 4.2V 2A			
<b>Shell</b>	High rigid precision-cast aluminium with coating and vents			
Optional lamp and filters				
Color	Type	Excitation filter	Dichroic mirror	Emission filter
Blue	Bandpass	480/30nm	505nmLP	535/40nm
Green	Bandpass	540/25nm	565nmLP	605/55nm
Green	High transmission	530/40nm	570nmLP	590nmLP
Yellow	Bandpass	560/40nm	600nmLP	635/60nm

## Cases



Olympus CXK53



Olympus CX41



Olympus IX51



Olympus IX71

## Sample images

