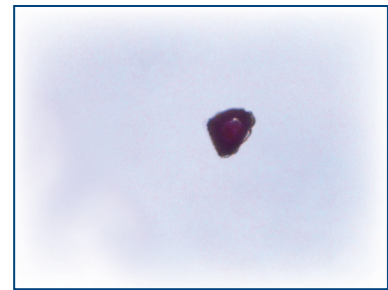
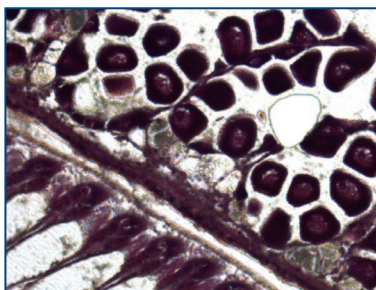
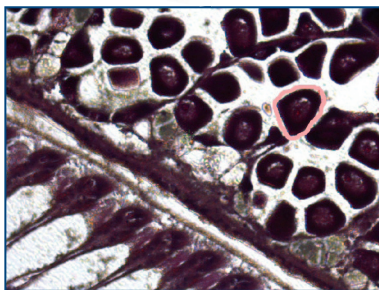
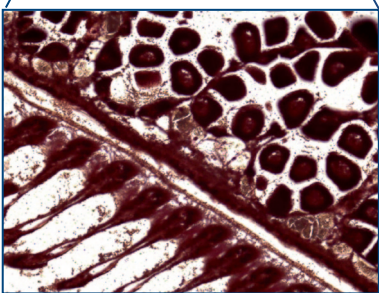
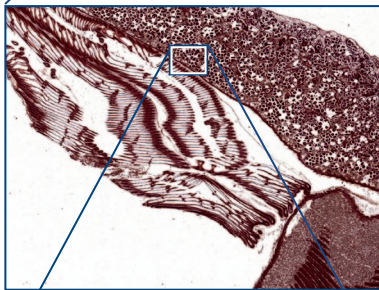
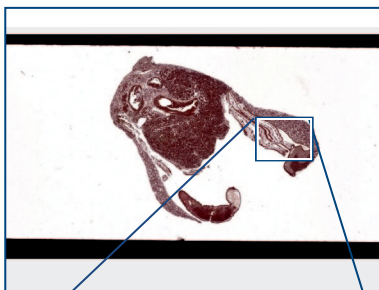


## Microscopic Single Cell Isolation

# Whole Slide Imaging meets Laser Microdissection MMI CellScan



Scan full resolution digital slides, annotate your selection, and cut cells by laser microdissection - all in one system!



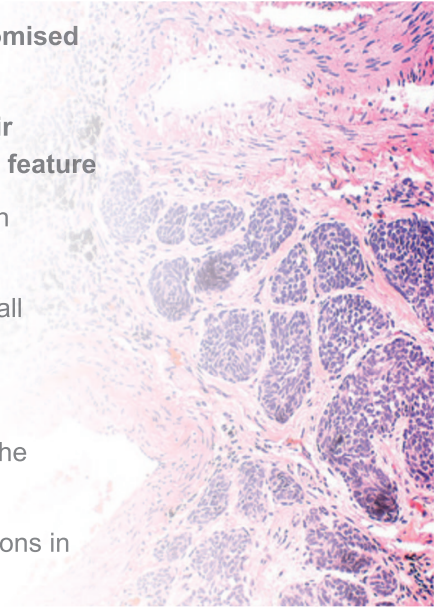
### MMI CellScan: Scan - Select - Cut

The MMI CellScan module allows you to include Whole Slide Imaging to your CellCut Laser Microdissection workflow:

1. Scan your slides – full resolution in any magnification
2. Annotate your selection – directly into whole slide image
3. Excise your cells – precisely and accurately

## Your benefits with the MMI CellScan

- Combine **full resolution whole slide scanning** with absolute and **uncompromised positioning** for subsequent **laser microdissection**
- Pathologists and researchers **reduce their hands-on time** but contribute **their valuable expertise** using MMI CellScan's easy to use **on-screen annotation feature**
- Improved handling of **sensitive fluorescent samples**: annotate your selection without prolonged exposure to photobleaching light
- Flexible and quick slide scanning is **compatible with all MMI products**, with all objectives, with most microscopes, and most Slide Viewers
- Document all steps of your work with **full resolution** images
- **Ultra-fast data processing** and **slide viewing** at any zoom level,... down to the single pixel
- The MMI CellScan module **fully integrates into your workflow** with applications in Pathology, Oncology, Diagnostics, Forensics, and many more



## Technical details

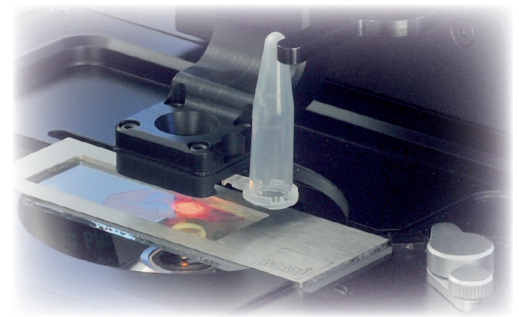
- Scanning speed: 15mm x 15mm area in less than 75seconds (20x objective)<sup>1,2</sup>
- High sensitivity CMOS camera<sup>3</sup>
- Individual focus map<sup>4</sup>
- Direct annotation in whole slide image
- Absolute positioning and sample localization
- Fully compatible with all MMI Products and with all microscope objectives
- Fully compatible with all standard microscopy imaging modules, including fluorescence
- Compatible with most microscopes and with most Slide Viewers
- Compatible BigTIFF file format

<sup>1</sup> refers to 1 full slide (75mm x 25mm) in less than 10 minutes

<sup>2</sup> requires HP Z 2xx or higher workstation

<sup>3</sup> upgrade from MMI cameras DXA285cf or MXF285c

<sup>4</sup> requires motorized microscope



## Contact us

You would like to know more about our solutions and products?

Feel free to contact us.

We are happy to discuss your applications and projects!



**Molecular Machines & Industries** Germany | Switzerland | Hong Kong | USA

**Microscopic Single Cell Isolation**

Phone (Germany): +49 89 319 048 40

Phone (USA): +1 331 307 0273

Email: [info@molecular-machines.com](mailto:info@molecular-machines.com)



[www.molecular-machines.com](http://www.molecular-machines.com)