

## MZX-LED Series LED Fluorescence Illuminator



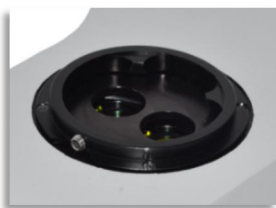
MZX-BG-LED series LED fluorescent illuminator is self-researched by Micro-shot company. It is designed to upgrade stereo microscope to fluorescent functional. The LED illuminator integrates filters cubes and light source in one unit, switch fluorescence observation and bright field observation by wheel. What is more, it keeps original stereo microscope optical performance no matter depth of field or field of view. Stereo fluorescent microscope is ideal for scientific laboratory GFP and in vivo experiment such as zebrafish, nematodes, fruit flies and other fluorescent microscopy fields.

### Features

- Compact design all in one unit
- 6W LED lighting for each filter group
- Continuously adjustable brightness with rotatable knob
- No need preheating or cooling, open to use
- Turret wheel control different color lighting
- One-stop operation of light source and filter, no need change light source
- No need external or added power supply, PSE labeled power adapter
- Safety, environment friendly and human friendly
- Coated precision-cast aluminium with vented design
- CE, FCC, EMC, EU, ISO certified
- Compatible to various stereo microscope

### Applications:

- In vitro
- Model organism
- Zebrafish
- Nematodes
- C. elegans
- Drosophila
- Seed screening
- TransGene



Double lighting professional for stereo microscope  
Precision-cast flange well matched different microscope  
Allen driver lock device for stable working



Accurate turret wheel control different color lighting  
Lighting lamp change simultaneously  
Laser printing mark



Lever control LED selection  
Avoid specimen fluorescence reduction from lighting  
Space to paste mark

## Specification

Modes	Items	LED lamps	Filter Groups	Compatible microscopes
Two colors	MZX-BG-LED	Blue and Green	Blue and Green Longpass	Olympus SZX Nikon SMZ Leica M
Single color	MZX-GFP-LED	Blue	Blue bandpass	Zeiss V/Discovery Sunny SZX12
Standard LED lamp and Filters				
Color	LED lamp	Filter wavelength		
	Color	Excitation filter	Dichroic mirror	Emission filter
Blue	Blue	480/40nm	505nmLP	520nmLP
Green	Green	530/40nm	570nmLP	590nmLP
UV	UV	360/50nm	400nmLP	420nmLP
<b>Light source</b>	6W LED for each filter group, 3W per LED lamp			
<b>Observation</b>	Fluorescence, bright field from microscope original light			
<b>Operation</b>	Turret :Blue, Green, O (Bright field)			
<b>Power control</b>	Rotatable knob, continuously adjustable brightness			
<b>Input power</b>	DC 12V 2A			
<b>Shell</b>	High rigid precision-cast aluminium with coating and vents			
<b>Light baffle</b>	Orange color plastic light baffle			
Optional LED lamp and Filters				
Color	Type	Excitation filter	Dichroic mirror	Emission filter
Blue	Bandpass	480/30nm	505nmLP	535/40nm
Green	Bandpass	540/25nm	565nmLP	605/55nm
Green	High transmission	530/40nm	570nmLP	590nmLP
Yellow	Bandpass	560/40nm	600nmLP	635/60nm

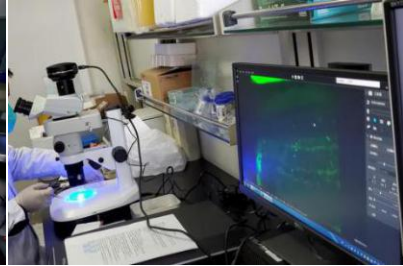
\* UV lighting is external of gooseneck fiber light



## Cases



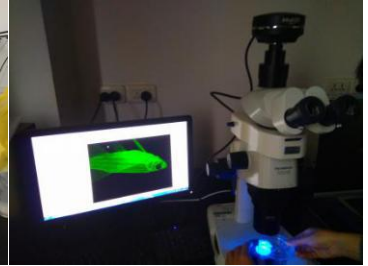
Olympus SZX7



Olympus SZX7



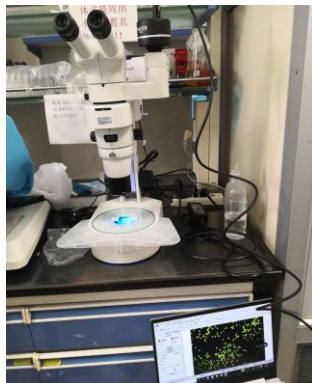
Olympus SZX10



Olympus SZX16



Nikon SZM18



Leica M205C



Leica M6



Leica M8



Zeiss V8



Zeiss V8

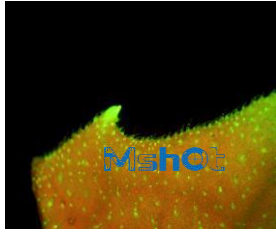


Zeiss V8

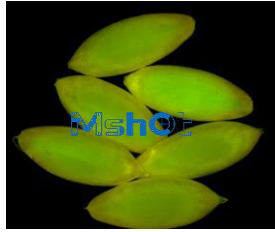


Zeiss V8

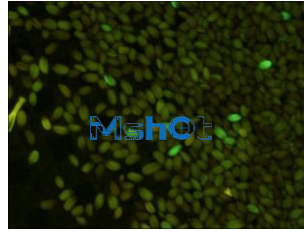
## TransGene Plants



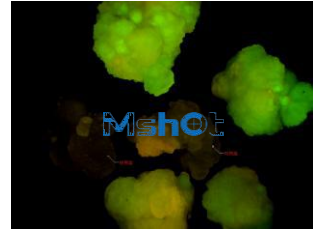
Leaf



Cucumber seed

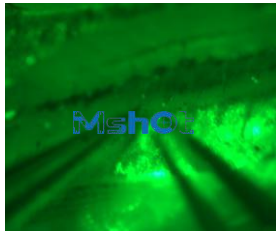


Rice seed



GFP seed

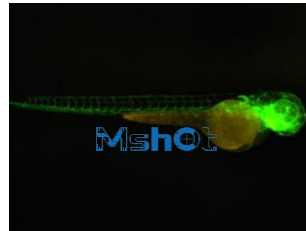
## Zebrafish



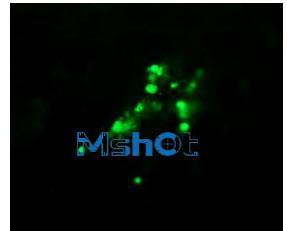
Clip follicle



Zebrafish egg

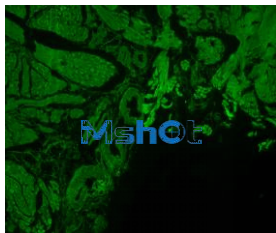


Grown zebrafish

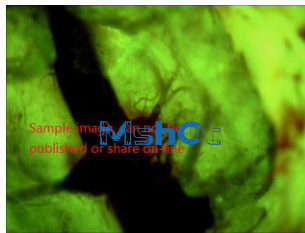


Zebrafish cell

## Little mouse



Intestine



Heart thrombus



Intestine

## Drosophila



Drosophila



Young worm



Fruit fly

## C.elegant



## Worm



Worm egg



Silkworm eggs