

pco.panda 26

ultra compact global shutter
sCMOS camera

available in
mono and color

dust-protected
housing

high resolution
5120 x 5120 pixel

65 mm

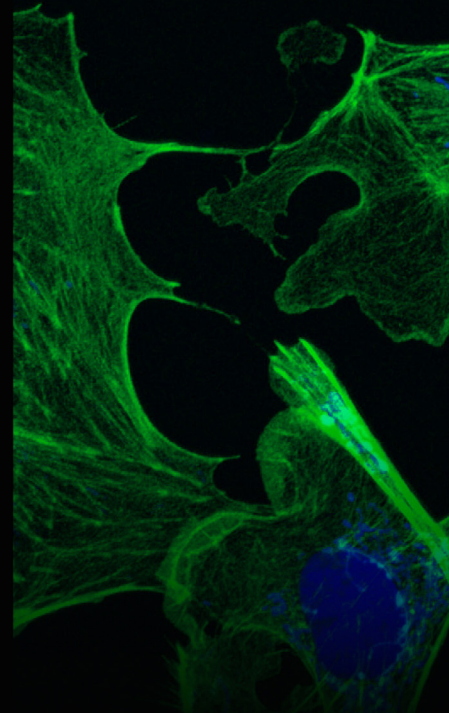
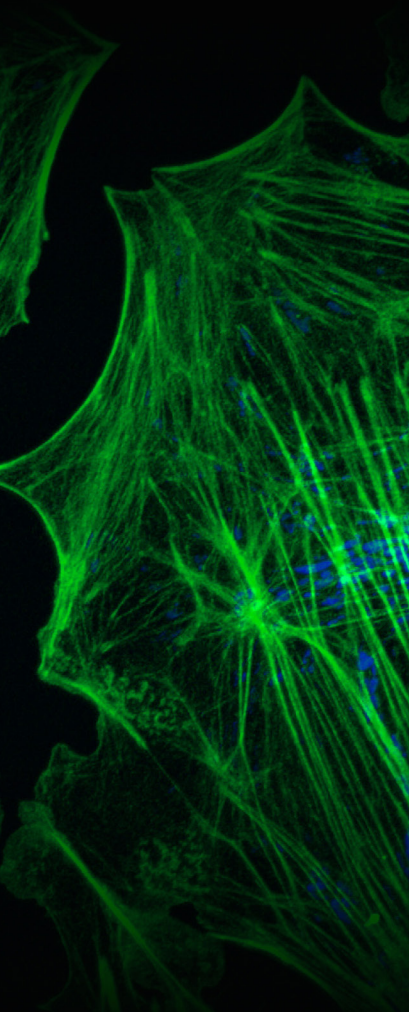
ultra
compact
design

single cable solution
data & power supply via USB 3.1

true charge domain
global shutter

1288 
EMVA Standard Compliant

pco.



» sCMOS image sensor

| | |
|---|---|
| type of sensor | global shutter scientific CMOS (sCMOS) monochrome |
| resolution (h x v) | 5120 x 5120 active pixel |
| pixel size (h x v) | 2.5 μm x 2.5 μm |
| sensor format / diagonal | 12.8 mm x 12.8 mm / 18.1 mm |
| shutter mode | global/snapshot shutter (GS) |
| MTF | 200 lp/mm (theoretical) |
| fullwell capacity | 4500 e ⁻ |
| readout noise (typ.)¹ | 2.3 _{med} e ⁻ / 2.5 _{rms} e ⁻ |
| dynamic range (typ.) | 66 dB |
| quantum efficiency | 65 % |
| spectral range | 320 nm .. 1000 nm |
| dark current (typ.) | 3 e ⁻ /pixel/s @ 21 °C ambient temperature |
| DSNU | < 1 e ⁻ rms |
| PRNU | < 1.2 % |
| anti blooming factor² | > 10 000 |
| parasitic light sensitivity | 1/10000 |

» camera system

| | |
|---|---|
| maximum frame rate @ full resolution | 6 fps |
| exposure / shutter time | 27 μs .. 20 s |
| dynamic range A/D | 12 bit |
| A/D conversion factor | 1.1 e ⁻ /DN |
| pixel data rate | 187 Mpixel/s |
| binning horizontal | x1, x2, x4 |
| binning vertical | x1, x2, x4 |
| region of interest (ROI) | horizontal: steps of 8 pixel (min. 24) vertical: steps of 2 pixel (min. 8) |
| non linearity | < 0.6 % |
| cooling method | passive cooled |
| trigger input signals | frame trigger, sequence trigger, programmable input (SMA connectors) |
| trigger output signals | exposure, busy, programmable output (SMA connectors) |
| data interface | USB 3.1 Gen 1 |
| time stamp | in image (1 μs resolution) |

¹ The readout noise values are given as median (med) and root mean square (rms) values, due to the different noise models, which can be used for evaluation. All values are raw data without any filtering.

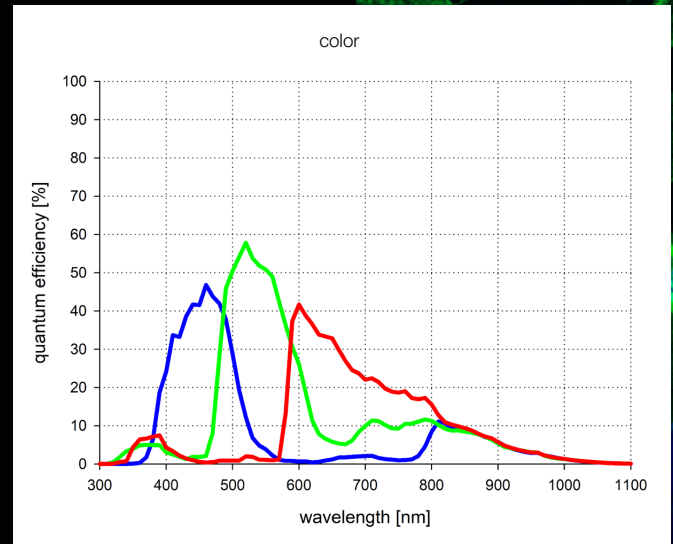
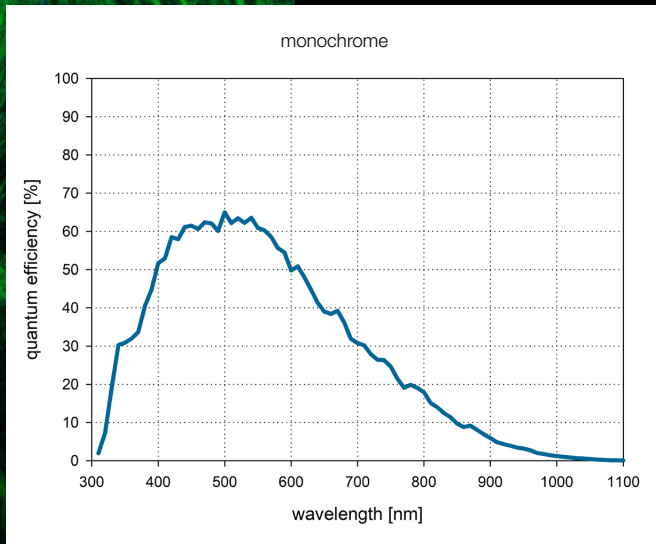
² Based on image sensor data sheet.



» general

| | |
|---------------------------|-------------------------------|
| power delivery | power over USB 3.1 Gen 1 |
| power consumption | typ. 4.5 W (max. 6.0 W) |
| weight | 600 g |
| operating temperature | + 10 °C .. + 40 °C |
| operating humidity range | 10 % .. 80 % (non-condensing) |
| storage temperature range | - 10 °C .. + 60 °C |
| optical interface | F-mount, C-mount |
| CE / FCC certified | yes |

» quantum efficiency



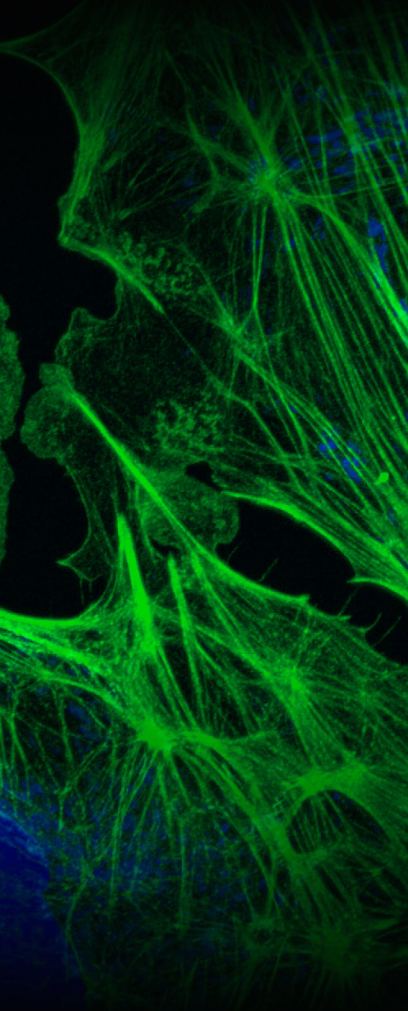
QE curves of image sensor as measured by manufacturer.

» frame rate table

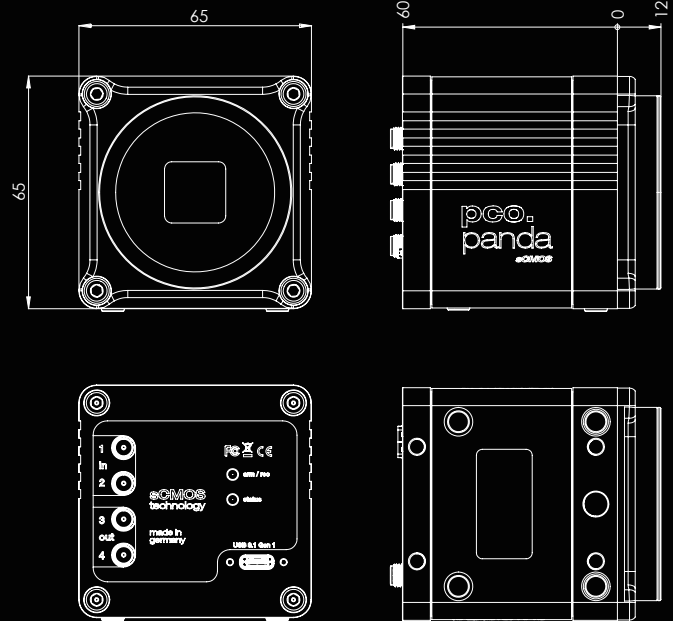
| | |
|-------------|---------|
| 5120 x 5120 | 6 fps |
| 5120 x 1024 | 30 fps |
| 5120 x 512 | 59 fps |
| 5120 x 256 | 115 fps |
| 5120 x 128 | 216 fps |
| | |
| 1920 x 1080 | 29 fps |
| 1600 x 1200 | 26 fps |
| 1280 x 1024 | 30 fps |
| 640 x 480 | 63 fps |
| 320 x 240 | 122 fps |

» benefits

ultra compact design
sealed electronics for dust & dirt protection
spider-less mounting with only 6.18 mm to image plane

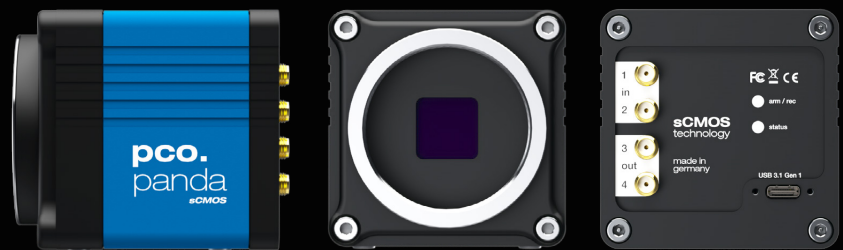


» dimensions



F-mount and C-mount lens adapter are changeable.
All dimensions are given in millimeter.

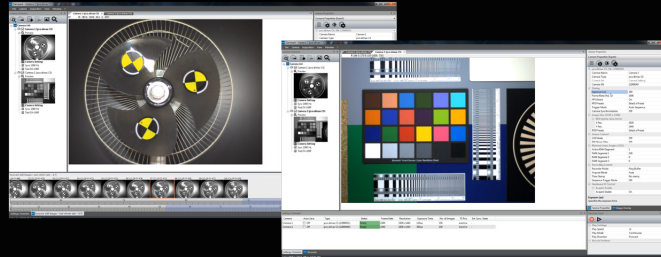
» camera view



» applications

brightfield microscopy | fluorescence microscopy | digital pathology | mesoscopy (low magnification microscopy) | high-speed bright field ratio imaging | high throughput screening | high content screening | biochip reading | spinning disk confocal microscopy | 3D metrology | industrial quality inspection

» software



With pco.camware you control all camera settings, the image acquisition and the storage of your image data. The pco.sdk is the complementary software development kit. It includes dynamic link libraries for user customization and integration on Windows-PC platforms. Drivers for popular third party software packages are also available for you.

All this items like pco.camware, pco.sdk and third party drivers, are free-to-download at www.pco.de.

» third party integrations



contact

pco europe

+49 9441 2005 50
info@pco.de
pco.de

pco america

+1 866 678 4566
info@pco-tech.com
pco-tech.com

pco asia

+65 6549 7054
info@pco-imaging.com
pco-imaging.com

pco china

+86 512 67634643
info@pco.cn
pco.cn



for application stories
please visit our website

official PCO sales partner

pco.

subject to changes without prior notice | lens is sold separately
©PCO AG, Kelheim | pco.panda 26 data sheet | v1.04



ISO 9001:2015